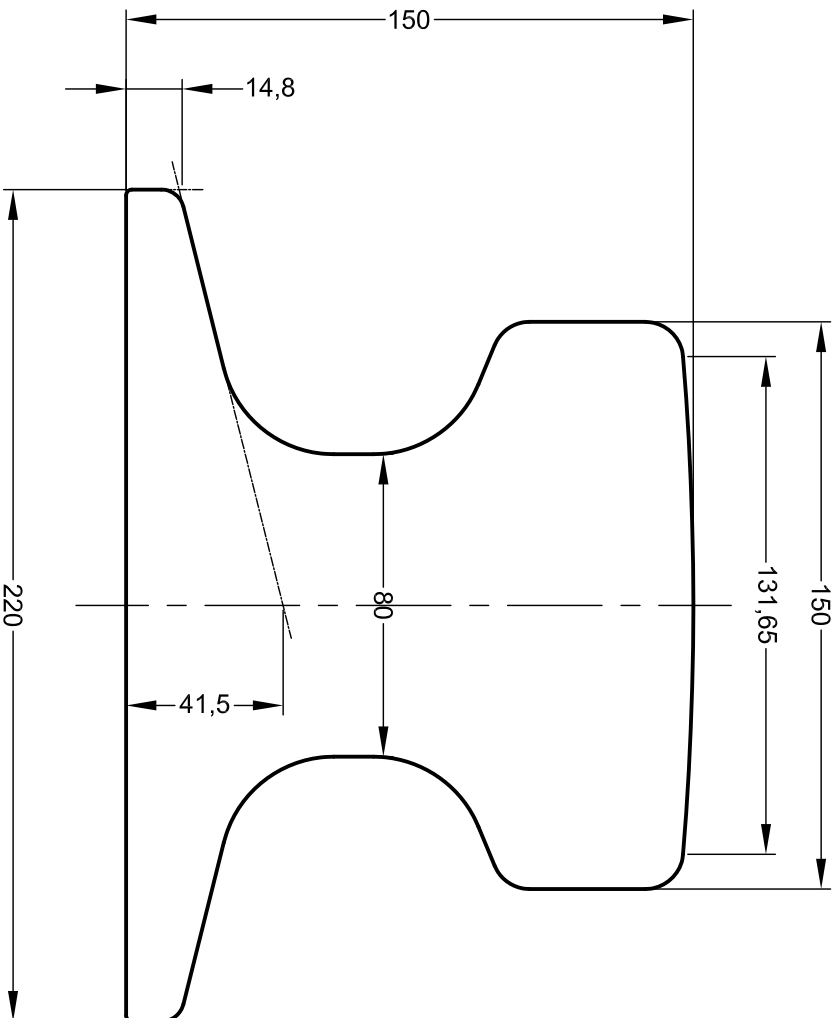


THIRD ANGLE PROJECTION

NOTE: THE PROPERTIES SPECIFIED BELOW HAVE BEEN CALCULATED USING AUTOCAD SOFTWARE AND ARE ACCURATE AT THE TIME OF THIS DRAWING ISSUE. THESE FIGURES MAY DIFFER SLIGHTLY FROM THOSE PUBLISHED IN THE STANDARD FOR THE RAIL.

**GANTRAIL**<sup>®</sup>  
 Rail Mounting Systems

**Gantry Railing Limited**  
 SUDMEADOW ROAD, HEMPSTED  
 GLOUCESTER GL2 5HG, ENGLAND  
 Tel: (01452)300888 Fax: (01452)300198  
 International Dialling # 44 1452  
<http://www.gantrail.com>  
 E-Mail: [info@gantrail.com](mailto:info@gantrail.com)

Rail Designation	A150
Rail Origin	GERMANY
Standard	DIN
Area of section	19311 mm <sup>2</sup>
Calculated Mass	150.3 kg/m
Neutral Axis to base	73 mm
Moment of Inertia	I <sub>xx</sub> 4413 cm <sup>4</sup> I <sub>yy</sub> 3652 cm <sup>4</sup>

Edition B  
 Date 06/07/10  
 Scale 1:2 @ A4

FOR GUIDANCE ONLY  
 THIS INFORMATION HAS BEEN  
 PROVIDED IN GOOD FAITH BUT  
 SPECIFICATIONS DO CHANGE