
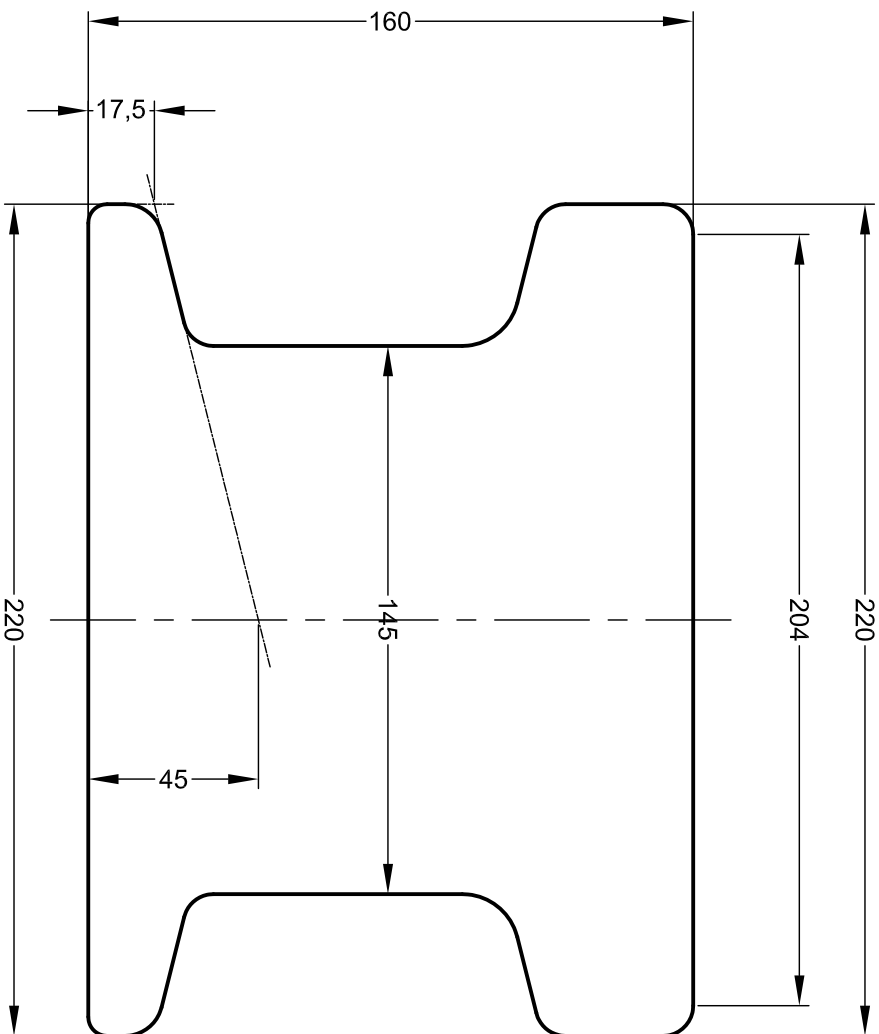


THIRD ANGLE PROJECTION

NOTE: THE PROPERTIES SPECIFIED BELOW HAVE BEEN CALCULATED USING AUTOCAD SOFTWARE AND ARE ACCURATE AT THE TIME OF THIS DRAWING ISSUE. THESE FIGURES MAY DIFFER SLIGHTLY FROM THOSE PUBLISHED IN THE STANDARD FOR THE RAIL.

**GANTRAIL**<sup>®</sup>  
 Rail Mounting Systems

**Gantry Railing Limited**  
 SUDMEADOW ROAD, HEMPSTED  
 GLOUCESTER GL2 5HG, ENGLAND  
 Tel: (01452)300888 Fax (01452)300198  
 International Dialling # 44.1452  
<http://www.gantrail.com>  
 E-Mail: [info@gantrail.com](mailto:info@gantrail.com)

Rail Designation	MRS 221
Rail Origin	LUXEMBOURG
Standard	TRADE ARBED
Area of section	28207 mm <sup>2</sup>
Calculated Mass	221.4 kg/m
Neutral Axis to base	82.8 mm
Moment of Inertia	I <sub>xx</sub> 6862 cm <sup>4</sup> I <sub>yy</sub> 8167 cm <sup>4</sup>

FOR GUIDANCE ONLY  
 THIS INFORMATION HAS BEEN  
 PROVIDED IN GOOD FAITH BUT  
 SPECIFICATIONS DO CHANGE

1 2 3 4 5 6 7 8

F THE TECHNICAL DATA CONTAINED IN THIS DRAWING IS THE PROPERTY OF GANTRY RAILING LIMITED AND IS SUBJECT TO COPYRIGHT ©

F